

# BACH elementary SCHOOL NEWS

MARCH 30, 2016



## DEAR BACH FAMILIES,

You play an important role in the school success of our children at Bach Elementary School. There are many different ways that you can get involved and support your children’s learning. Whether you attend PTO meetings, volunteer in your child’s classroom, help with the book fair, or read with your child at home each night, you are making a contribution that will help your child do well in school.

Family engagement is strong at Bach, but we’d like to make it even better and make sure we meet the needs of families, students, and teachers. You can help us form a better partnership between school and home by taking time to complete the annual Climate Survey.

In order to gain an even better understanding of the strengths, challenges, and priorities of all stakeholders at Bach, we will review the data and identify themes and trends, doing our best to make sense of the implications for our school. This information will guide our school improvement efforts for the coming school year.

Although the survey is anonymous, we welcome your thoughts, feedback, and suggestions through conversations, coffee chats, email, and personal notes. Throughout this process, personal reflections will be kept in confidence. Feedback will be shared in the form of themes and trends in collected data. If you have any suggestions, your feedback is always welcome.

Please complete the Climate Survey no later than **April 1, 2016**.

Thank you for your participation in this process. We look forward to the important work of learning, teaching, and community building that lies ahead. If you have any questions about the survey, please don’t hesitate to give me a call. I’m always glad to talk with you!

Sincerely,

—*Alison Epler, Principal*

## UPCOMING EVENTS

### Family Reading Night

MIRM Celebration 2:45–3:45  
Thursday 3/31, 6:30–8pm, MPR

### FREE Coffee & Donuts - Friday,

April 1, 9–10am, MPR

### 4th & 5th to Hill

Friday 4/1, 10:30–12:30

### AAPS Spring Break

April 4–8

### Heritage Festival

Friday, 4/15, 6–8pm

### PTO Meeting

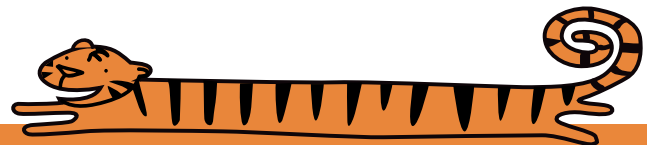
Thursday, 4/21 6:30–7:30 pm, MPR

### Burns Park Run

Sunday, May 1, 8:30 am

### Bike/Walk to School Day

Wednesday, May 4



At Bach School we are dedicated to creating an environment that inspires learning. We strive to challenge each student to achieve full academic potential and maintain consistent standards for socially responsible behavior. We believe education is a share responsibility of the staff, students, parents, and the community. We value children as unique individuals and recognize their ethnic diversity and various learning styles as strengths.

## FREE Coffee & Donuts!

**FRIDAY, APRIL 1ST, 9am – 10am**

Please join us for coffee and donuts in the MPR right after drop-off on **Friday, April 1st, 9am – 10am**. Bach families can socialize, meet new people, and kick off the week of Spring Break.

Younger siblings are welcome. Hope you can stop by!



## OUR PTO NEEDS YOU!



Interested in getting more involved in the Bach community. We are welcoming new board and leadership members for the 2016 – 2017 school year.

A few positions we will definitely need to fill:

- » Co-Treasurer
- » Fundraising Coordinator (NEW!)
- » Spiritwear Coordinator

There will be many other open board and leadership roles, and we can find the right one for you. If you're curious and want to learn more, talk to a current board member or email [president@bachpto.org](mailto:president@bachpto.org).

## PTO meeting!

Thursday, April 21  
6:30 – 7:30 pm

Bach Multipurpose Room

FREE childcare provided for school-aged children. Everyone is welcome!



## REMEMBER TO VOTE on may 3, 2016

There is a Special Education Millage Proposal on the May 3 ballot.

Your vote is important. To find out more about the Special Education Millage Proposal, please visit [www.a2schools.org](http://www.a2schools.org).



## save THE DATE ...

The Bach Ice Cream Social is Friday, June 3rd!



## Bach Bike/Walk to School Day Wednesday, May 4, 2016

(Rain date Thursday, May 5)

**Join in the spring Bach Bike/Walk to School Day to encourage and support young people to bike or walk to school!**

**All bikers and walkers are invited to arrive at the Bach playground at 8:40 for a group photo!**

**Bike/Walk Route Planning:** The National Center for Safe Routes to School provides helpful information, including safe route planning, at [walkbiketoschool.org/](http://walkbiketoschool.org/). Please consider planning a group ride or walk with other families in your neighborhood.

**Bike/Walk Safety:** Parents are responsible for children's safety traveling between home and school, so please accompany your young biker(s) and walkers to school. All children must have a helmet and a bike lock. Bach cannot be responsible for unsecured bikes. Parents may also bring a child's bike home. Please do not leave bikes at school overnight. **Let your bus driver know** if your child won't be riding. **PARENTS: BE A GOOD EXAMPLE—WEAR A HELMET!**

### **Questions?**

John Beeson, Erica Briggs, Kelly Fitzsimmons—Bach BWTS Day coordinators, [biketoschoolday@bachpto.org](mailto:biketoschoolday@bachpto.org) or 734.945.0442.

**Tips and tricks for riding with kids:** Riding with kids slows you down, and that's not a bad thing. Beyond creating future bike riders, ingraining street skills, and engaging in physical activity, biking with kids is fun. Here's how to make the most of it.

<http://pfb.peopleforbikes.org/take-a-brake/coasting-with-kids/>



**I FOUND I COULD SAY THINGS WITH COLOR AND SHAPES THAT I COULDN'T SAY ANY OTHER WAY – THINGS I HAD NO WORDS FOR.. GEORGIA O'KEEFE**

This is one of my favorite quotes to share with my students, particularly when we are looking at and talking about abstract art. It is such a great starting point in our discussions when looking at a piece of art to talk about what we are seeing. what shapes, what colors, what types of lines do we see, what do we think, and finally how does it makes us feel. In order for my students to think like artists I think it is important to provide opportunities for students to observe and describe artistic works. The art classroom is prime ground for teaching thinking and literacy skills. I start teaching all my grades (even kindergarteners) how to interpret and understand artworks so that they can begin to understand how to compose art critiques. They need to be able to look at a famous artwork and begin to understand why it “works” and how the artist used certain elements and principles to make it work. . My students always amaze me with their observations and comments about how they see an artist’s work and even how they see and feel about their own work.

Last week I had the opportunity to attend the national art teachers’ conference in Chicago. It was a fabulous experience and I came back with a fresh outlook, and great ideas and inspiration. I also had the opportunity to view the Van Gogh exhibit at the Chicago Art Institute. It is a wonderful show and kid friendly. I highly recommend visiting it to families who maybe spending time in Chicago over spring break. The Art Institute has an amazing permanent collection as well and the Thorne Room Miniatures are a must see.

In the art room at Bach, we are doing a lot of painting. I am very excited about the arrival of a large new drying rack purchased with PTO funds. It is yet to be assembled, but it is going to make a huge difference as I often have 6 classes in one day all painting. Thank you so much for all your support Bach PTO!

Artfully yours,

***Kim Furey***

Celebrate the cultural diversity of our Bach community at the

# Bach Heritage Festival



Friday, April 15, 2016  
6:00 – 8:00 pm

- \*Taste foods from around the world!*
- \*Enjoy multicultural entertainment!*
- \*See traditional costumes from other countries!*
- \*Visit displays from many cultures!*
- \*Play a language game!*

If you have questions or would like to help with the Heritage Festival, please contact Kristin Burgard at [734-623-0117](tel:734-623-0117) or [kristinb@talkamerica.net](mailto:kristinb@talkamerica.net).



Sponsored by the Bach Elementary PTO



**Purchase SCRIP for all your all home projects and support Bach School!**

**Conveniently, we have cards IN STOCK for many of our popular stores.**

**At no cost to you, there is no easier way to support Bach PTO!**



**Bach PTO**

Questions?  
[scrip@bachpto.org](mailto:scrip@bachpto.org)  
[www.bachpto.org/scrip/](http://www.bachpto.org/scrip/)

**SCRIP Store Hours**  
Wednesdays  
8:45 - 9:15am (lobby)

## BRIGHT IDEAS FOR Non-SCHOOL HOURS!

Rec & Ed's before/after school classes are designed for your child to explore new interests, develop problem-solving and critical thinking skills in a safe and nurturing environment.

New classes offered this Spring term are O3 Sports Baseball, O3 Sports Ultimate Frisbee, A2Sports Camp and Kid Capoeira along with the all-time favorites: art, chess, dance, engineering, science, technology and yoga. [View before/after school classes available at your child's school.](#)

When is the best time to enroll my child in after school classes? How does my child's teacher know that my child is attending an after school class? How do I get a scholarship. These important questions and others are answered on [Rec & Ed's After School O & A page.](#)

Registration is open now. Here are easy ways to find and register for classes offered at your school:

- » [View the before/after school classes offered at your school](#)
- » Check your child's backpack the week of March 28th. You'll find a flyer listing after school classes specific to your school.
- » If the after school classes do not fit your schedule, Rec & Ed also offers many activities for children and adults evenings and on weekends.

Rec & Ed wants every child to be able to participate in before/after school activities. Learn more about our [scholarship program and application procedures.](#) Find out about the new, easy scholarship application process for families with children who receive Free and Reduced School lunch.



**Ann Arbor  
PTO  
THRIFT SHOP**  
a2ptothriftshop.org  
2280 S. Industrial Hwy. 734-996-9155

**SHOP DONATE FUNDRAISE**

A non-profit resale shop with all proceeds benefitting Ann Arbor Public Schools and student enrichment.

SHOP	DONATE	FREE
Mon-Fri 9-7	Mon-Fri 10-6	furniture pickup
Sat 9-6 Sun 11-5	Sat 10-5 Sun 12-4	call 996-9155

Find us on Facebook  Follow us on Twitter 

**Athletic Equipment • Books • Clothing • Toys  
Furniture • Household Goods and More**